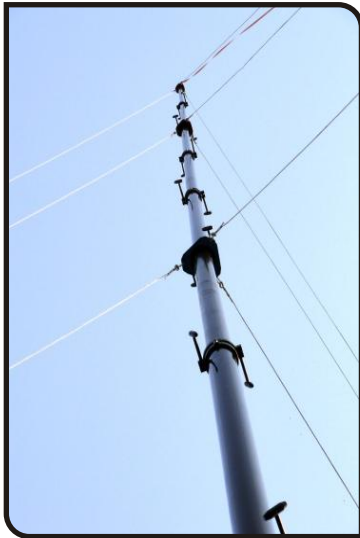


PNEUMATIC TELESCOPIC MASTS



The pneumatic telescopic mast is a structure used to raise the payload to an operational level. It consists of several concentric, nesting mast sections, fabricated from special grade, light weight made of high tensile alloy aluminum extruded tubes that extend and retract pneumatically. Pneumatic masts are ideal for military communications, surveillance, elevated testing, mobile radar, areal photography and meteorological applications etc.

When a mast needs to be in extended position for longer periods, locking collars allow the mast to remain extended indefinitely without air pressure. The mast is designed as per customer requirements like self supported, guy supported, Vehicle-mounted and ground-mounted.

Standard models are shown below.

Custom height and payload capacities are available upon request.

FEATURES

- ❖ Light weight, compact and simple to operate
- ❖ Long life span with minimum maintenance
- ❖ Maintains directional azimuth.
- ❖ Supports high guying forces
- ❖ Quick and easy to deploy at any place
- ❖ Can withstand wind loads of 120 kmph
- ❖ Can carry head loads up to 120 Kg (Depends upon requirements)
- ❖ Convenient for ground and vehicle mounting
- ❖ Sustain for all weather conditions.
- ❖ Any number of sections can be locked, in extended or retracted position as required.
- ❖ Corrosion resistant parts



MEDIUM HEIGHT MASTS

Specifications	5.5 Mtr	10 Mtr	15 Mtr
Retracted height	1.5 Mtr	2.2 Mtr	3.0 Mtr
Extended height	5.5 Mtr	10.0 Mtr	15.0 Mtr
Payload Capacity	50 Kg	50 Kg	35 Kg
Mast Weight (Aprox)	60 Kg	65 Kg	75 kg
Tube Diameter Range	147 to 89 mm	171 to 79 mm	147 to 79
Max. Operating Pressure	35 PSI	35 PSI	35 PSI

ULTRA HEIGHT MASTS

Specifications	18 Mtr	21 Mtr	25 Mtr
Retracted height	3.0 Mtr	3.6 Mtr	4.2 Mtr
Extended height	18.0 Mtr	21.0 Mtr	25.0 Mtr
Payload Capacity	30 Kg	30 Kg	20 Kg
Mast Weight (Aprox)	80 Kg	90 Kg	110 kg
Tube Diameter Range	147 to 69 mm	159 to 79 mm	171 to 59
Max. Operating Pressure	35 PSI	35 PSI	35 PSI